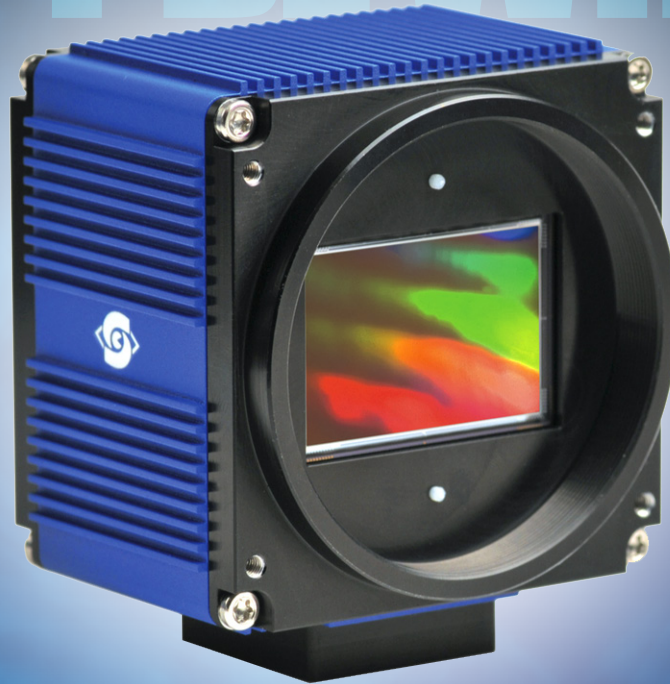


SMALL, BUT MIGHTY HIGH PERFORMANCE & RESOLUTION CAN'T BE WRONG



Compact Workhorse.

SVS Vistek SVCam-HR

The perfect solution for quasistatic digital image correlation.

Experience the Invisible.™

Contact us for more information or to schedule a demo today.

HADLAND
IMAGING

West Coast

1414 Soquel Ave, Suite 200
Santa Cruz, CA 95062
USA
phone: 1-408-203-2727
www.hadlandimaging.com

East Coast

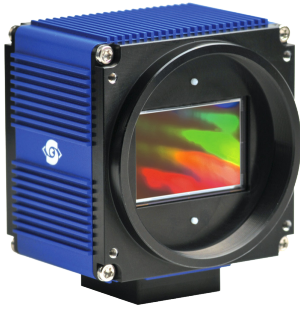
10 Park Place, Suite 507
Butler, NJ 07405
USA
phone: 1-862-228-2185

 **SVS-VISTEK**

For more information

Call **1-888-43HADLAND** (1-888-434-2352) or email,
sales@hadlandimaging.com about ultra high-speed imaging solutions.

SVS-VISTEK on the Web: www.svs-vistek.com/en/industrial-cameras



SVCam-HR Series

The HR-series is one of the most compact camera modules in its class – worldwide. With its ingenious thermal management design, external cooling is not required and the camera can be used in a wide temperature range.

All models are available in monochrome and color versions, and optionally with GigE Vision, Camera Link or CoaXPress interfaces.

Additional Features

GigE models

Dual GigE Vision data interface (2 x 120 MB/s)

Cable length up to 100 meters

Shading correction

2 x 2 binning

SDK for Windows (32/64 bit) & Linux available

Camera Link models

Camera Link data interface

Pixel Clock Setting for CCD sensors

4 x 4 binning

Power over Camera Link (PoCL)

CoaXPress

Quad CoaXPress (up to 4 x 6.25 Gbit/s)

E.g. 25 megapixels with 80 fps

Cable length up to 200 meters

SVS Vistek SVCam-HR Series

Small, but mighty. High performance with high resolution, 11–29 megapixels. A perfect high-speed imaging solution for quasistatic digital image correlation (DIC).

A Compact Workhorse, Ready for Action.

The HR series fulfills even the toughest demands on resolution without compromising on speed. Dual GigE Vision and Camera Link interfaces facilitate CCD resolution of 11 to 29 megapixels – up to 11 fps. For CMOS sensors, CoaXPress warrants up to 80 fps with resolution as high as 25 megapixels.

Tech Specs

All cameras of the SVCam-HR series have the following quality performance features:

- 11–29 Megapixels at optimized frame rates
- Manual gain
- Sensors from ON Semiconductor
- Look-up table
- Progressive scan CCD / global shutter CMOS
- Integrated temperature sensor
- Monochrome & color versions (Bayer Pattern)
- Versatile I/O concept: 24 V signal levels & RS232
- 128 MB internal memory
- LED control up to 4x
- 14-bit ADC with 8- or 12-bit output
- Logic trigger functions
- M58 lens mount (FFD 11,48 / F-Mount optional)
- Sequencer: up to 16 individual Intervals (exposure & LED)
- Dimensions: 2.75 x 2.79 x 2.16" (70 x 71 x 55 mm)
- 4 pulseloop modules generate signals for exposure, LED or triggering
- Tap balancing for CCDs: auto/manual
- Pulse-width modulation, high frequency – PWM
- Image flip
- Power supply: 10–25 VDC
- Custom defect pixel correction
- GenICam compliant
- Area of Interest / Partial Scan
- Read Out Control: manual/delayed
- White Balance: auto/manual (color versions)
- Exposure: trigger manual/auto/external
- Signal safe: Schmitt-trigger, debouncer & prescaler

HADLAND
IMAGING

West Coast

1414 Soquel Ave, Suite 200

Santa Cruz, CA 95062

USA

phone: 1-408-203-2727

www.hadlandimaging.com

East Coast

10 Park Place, Suite 507

Butler, NJ 07405

USA

phone: 1-862-228-2185

 **SVS-VISTEK**

For more information

Call **1-888-43HADLAND** (1-888-434-2352) or email,

sales@hadlandimaging.com about ultra high-speed imaging solutions.

SVS-VISTEK on the Web: www.svs-vistek.com/en/industrial-cameras